



MEDIA CONTACT:
Jack Damrill
Director of Communications
& Facilities
Oklahoma Turnpike Authority
Cell: 405.206.0005
Tel: 405.425.3610
jdamrill@pikepass.com
www.pikepass.com

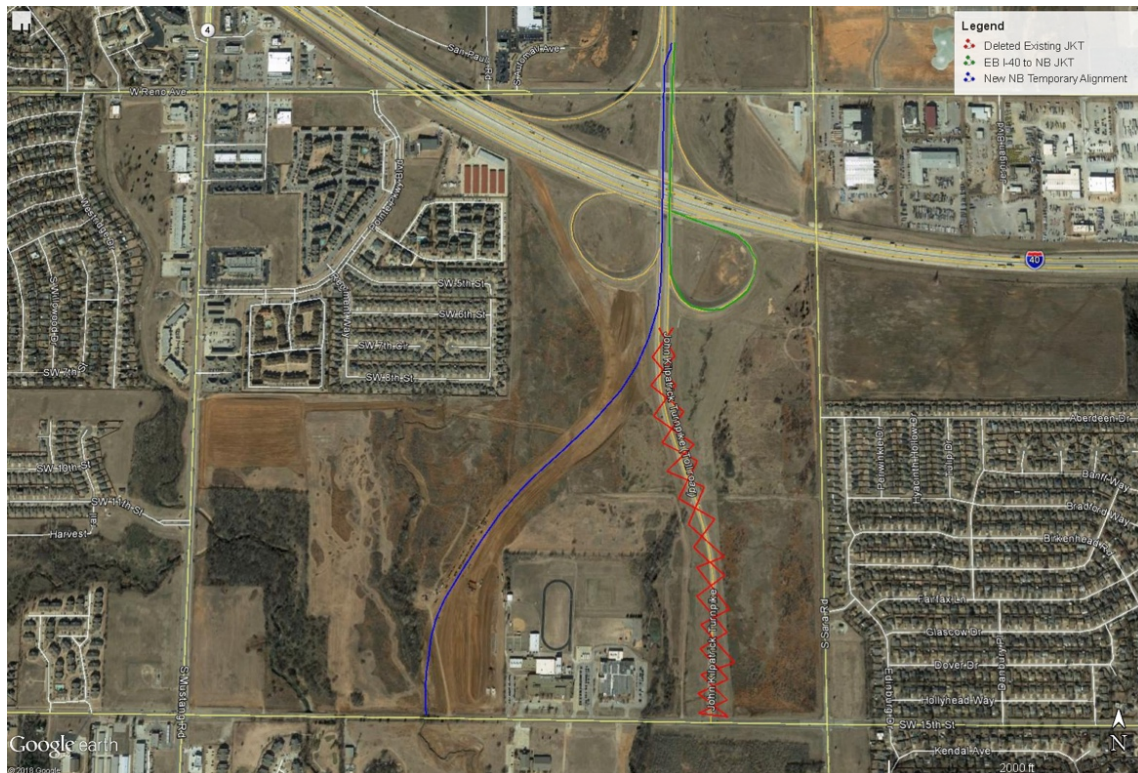
FOR IMMEDIATE RELEASE

**JOHN KILPATRICK TURNPIKE TRAFFIC SWITCHES TO
NEW SECTION NEAR SW 15TH STREET**
Extension Expected To Open Late 2019

OKLAHOMA CITY (Jan. 9, 2019) – Construction crews building the new John Kilpatrick Turnpike extension from I-40 to SH 152 has opened a small portion of the new roadway.

Traffic has been switched from the portion of the turnpike that ran south from I-40 to SW 15th to the new alignment running southwest from I-40 to SW 15th Street. During this phase of construction, traffic will be head-to-head on the new alignment so crews can tie-in the existing lanes of the turnpike at I-40 with the new alignment.

Motorists should stay aware of changing traffic conditions as construction continues on the new 7-mile extension.



###

About Oklahoma Turnpike Authority

Oklahoma Turnpike Authority was established in 1947 to construct, operate and maintain the Turner Turnpike. Today, Oklahoma turnpikes are the safest and quickest ways to travel across the state. Oklahoma Turnpike Authority is managing multiple renovations throughout the state to maintain and operate the turnpike system to the highest standard. To learn more about the Oklahoma Turnpike Authority and recent projects, visit, www.pikepass.com.

For more information about the OTA's Driving Forward program, please visit www.drivingforwardok.com.