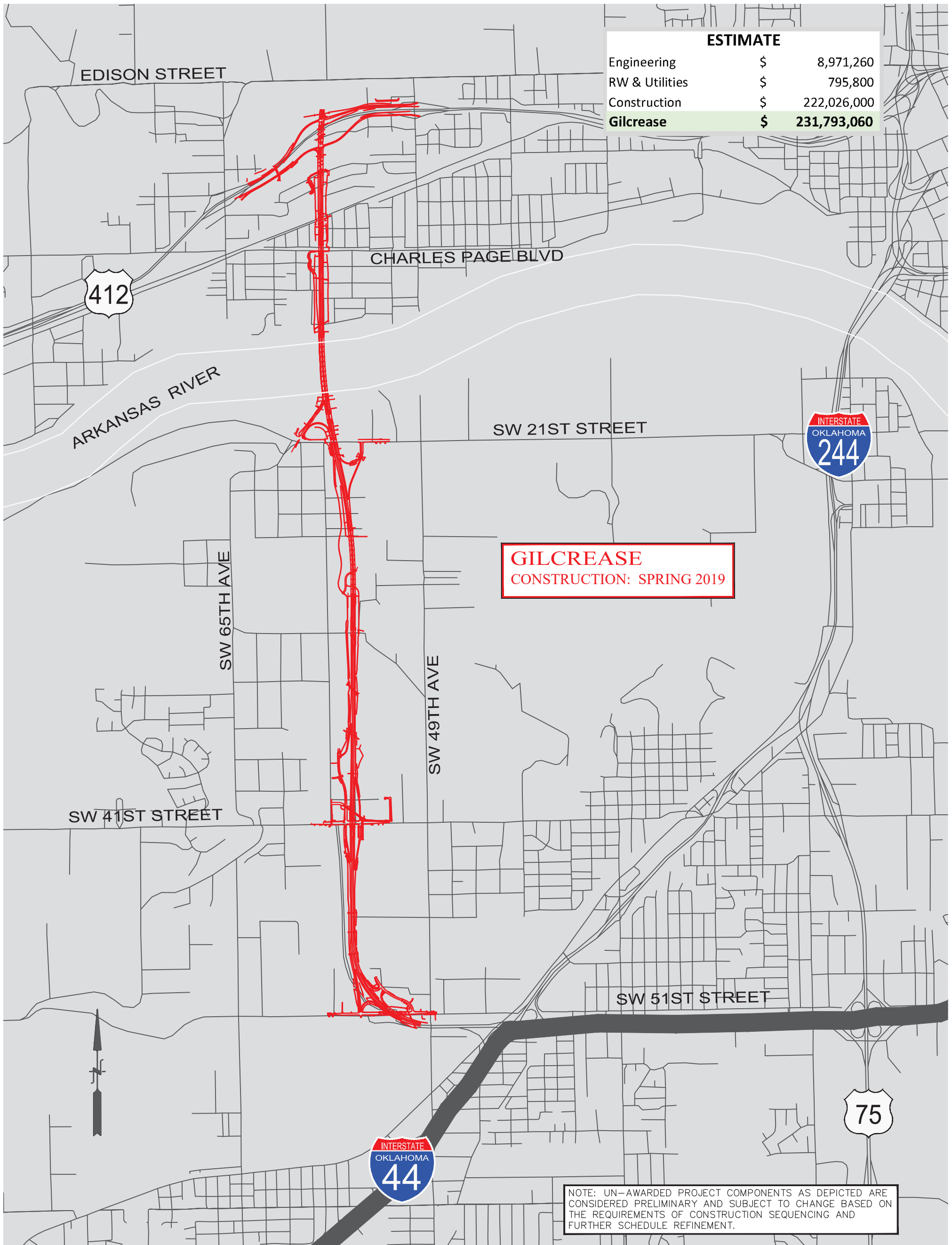




Driving Forward: Investing in Oklahoma's Future

Gilcrease Turnpike

March 2, 2018



ESTIMATE	
Engineering	\$ 8,971,260
RW & Utilities	\$ 795,800
Construction	\$ 222,026,000
Gilcrease	\$ 231,793,060

GILCREASE
CONSTRUCTION: SPRING 2019

NOTE: UN-AWARDED PROJECT COMPONENTS AS DEPICTED ARE CONSIDERED PRELIMINARY AND SUBJECT TO CHANGE BASED ON THE REQUIREMENTS OF CONSTRUCTION SEQUENCING AND FURTHER SCHEDULE REFINEMENT.